

Bryan W. Shaw, Ph.D., P.E., *Chairman*
Toby Baker, *Commissioner*
Jon Niermann, *Commissioner*
Richard A. Hyde, P.E., *Executive Director*



TEXAS COMMISSION ON ENVIRONMENTAL QUALITY

Protecting Texas by Reducing and Preventing Pollution

July 21, 2017

Ms. S. Susan Self, Vice President
9999 Technology LP
580 Decker Drive, Suite 203
Irving, Texas 75062

Re: Municipal Setting Designation (MSD) Certificate for 9999 W. Technology, 9999 W. Technology Boulevard, Dallas, Dallas County, Texas; Voluntary Cleanup Program (VCP) No. 2630; Customer No. CN604501965; Regulated Entity No. RN101532943

Dear Ms. Self:

The Texas Commission on Environmental Quality (TCEQ) received the above referenced Municipal Setting Designation (MSD) application on February 2, 2017 and additional information supporting this MSD application on July 5, 2017. Based on our review, the application contains the required information as outlined in Texas Health and Safety Code (THSC) §361.804. Enclosed is the Municipal Setting Designation Certification for your site. If you have any questions, please do not hesitate to contact me at (512) 239-3044 or via e-mail (timothy.eckert@tceq.texas.gov).

Sincerely,

A handwritten signature in black ink, appearing to read "Timothy Eckert".

Timothy Eckert
VCP-CA Section
Remediation Division

TJE/jdm

cc: Ms. Valerie Honeycutt, Koos & Associates, Inc. (via e-mail)
Mr. Sam Barrett, Waste Section Manager, TCEQ D/FW Region Office, R-4

Enclosure: MSD Certificate

TEXAS COMMISSION ON ENVIRONMENTAL QUALITY



MUNICIPAL SETTINGS DESIGNATION CERTIFICATE

As provided for in §361.807, Subchapter W, Texas Health and Safety Code (Solid Waste Disposal Act):

I, Beth Seaton, Director, Remediation Division, TCEQ, certify the Municipal Setting Designation (MSD) for MSD No. 350, in the City of Dallas, for the tract of land described in Exhibit "A". The eligibility requirements of Texas Health and Safety Code §361.803 are satisfied as attested to by the affidavit in Exhibit "B", provided pursuant to Texas Health and Safety Code §361.804(b)(2)(D). This certificate shall continue in effect so long as the ordinance or restrictive covenant required by Texas Health and Safety Code §361.8065 remains in effect.

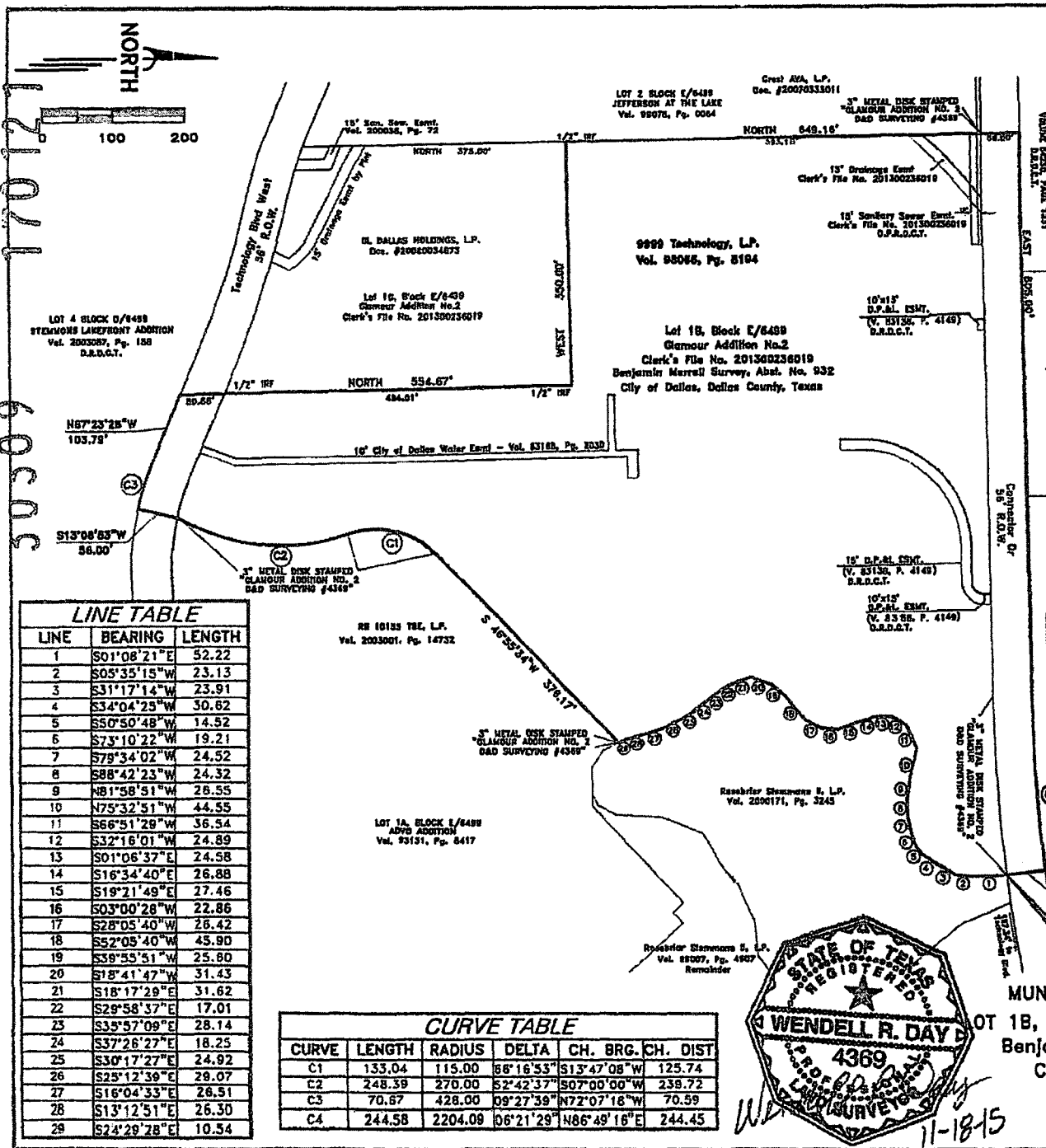
Any person addressing environmental impacts for a property located in the certified municipal setting designation shall complete any necessary investigation and response action requirements in accordance with Texas Health and Safety Code §361.808, in conjunction with the applicable Texas Commission on Environmental Quality environmental remediation regulation, as modified by Texas Health and Safety Code §361.808.

EXECUTED this the 19th day of July, 2017

Beth Seaton

Beth Seaton, Director
Remediation Division
Texas Commission on Environmental Quality

17012
30309

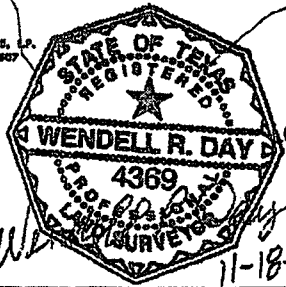


LINE TABLE

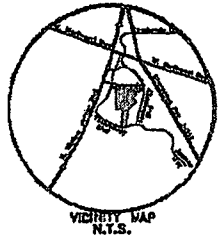
LINE	BEARING	LENGTH
1	S01°08'21"E	52.22
2	S05°35'15"W	23.13
3	S31°17'14"W	23.91
4	S34°04'25"W	30.62
5	S50°50'48"W	14.52
6	S73°10'22"W	19.21
7	S79°34'02"W	24.52
8	S88°42'23"W	24.32
9	N81°58'51"W	28.55
10	N75°32'51"W	44.55
11	S66°51'29"W	36.54
12	S32°16'01"W	24.89
13	S01°06'37"E	24.58
14	S16°34'40"E	26.88
15	S19°21'49"E	27.46
16	S03°00'28"W	22.86
17	S28°05'40"W	28.42
18	S52°05'40"W	45.90
19	S39°55'51"W	25.80
20	S18°41'47"W	31.43
21	S18°17'29"E	31.62
22	S29°58'37"E	17.01
23	S35°57'09"E	28.14
24	S37°26'27"E	18.25
25	S30°17'27"E	24.92
26	S28°12'39"E	28.07
27	S16°04'33"E	28.51
28	S13°12'51"E	26.30
29	S24°29'28"E	10.54

CURVE TABLE

CURVE	LENGTH	RADIUS	DELTA	CH. BRG.	CH. DIST
C1	133.04	115.00	66°16'53"	S13°47'08"W	125.74
C2	248.39	270.00	52°42'37"	S07°00'00"W	238.72
C3	70.67	428.00	09°27'39"	N72°07'18"W	70.59
C4	244.58	2204.09	06°21'29"	N86°49'16"E	244.45



D & D Surveying, Inc.
FIRM No. 10011130
103 S.W. 2ND ST. GRAND PRAIRIE, TX 75051
OFFICE (972)262-3898 ; Fax (972)262-3941
DRAWN BY TDH CHECKED BY WRD
SHEET 1 OF 1
18 NOV 2015



NOTE: Basis of Bearing is the south line (EAST) of Connector Drive as recorded in Volume 83189, Page 3322, D.R.D.C.T.

MUNICIPAL SETTING DESIGNATION EXHIBIT
LOT 18, BLOCK E/6499 - GLAMOUR ADDITION No.2
Benjamin Merrell Survey, Abstract No.932
City of Dallas, Dallas County, Texas
9999 Technology Blvd. West
16.615 Acres

COUNTY OF DALLAS)
STATE OF TEXAS)

Being a 16.615 acre tract of land situated in the City of Dallas, Dallas County, Texas in the Benjamin Merrill Survey, Abstract No. 932 and being all of Lot 1B, Block E/6499, of the Glamour Addition No. 2 as recorded in Clark's File No. 201300236019 of the Official Public Records of Dallas County, Texas (O.P.R.D.C.T.), and a portion of Connector Drive and Technology Boulevard West as recorded in Volume 85199, Page 3322, Deed Records, Dallas County, Texas, (D.R.D.C.T.), and being more fully described as follows:

BEGINNING at a found in 3" metal disc stamped "GLAMOUR ADDITION NO. 2 D&D SURVEYING #4369" set in concrete in the south line of Connector Drive (56' right-of-way) as recorded in Volume 85199, Page 3322, Deed Records, Dallas County, Texas, (D.R.D.C.T.), being the northeast corner of the said Glamour Addition No.2 and also being the northwest corner of a tract of land conveyed to Rosebriar Stemmons II, L.P. as recorded in Volume 2009171, Page 3245, D.R.D.C.T.;

THENCE leaving the south line of said Connector Drive and along the westerly line of said Rosebriar Stemmons II, L.P. tract along the westerly and northerly meanders of an existing lake the following courses and distances:

- South 01 degrees 08 minutes 21 seconds East, a distance of 82.22 feet to an angle point;
- South 05 degrees 35 minutes 15 seconds West, a distance of 23.13 feet to an angle point;
- South 31 degrees 17 minutes 14 seconds West, a distance of 23.91 feet to an angle point;
- South 34 degrees 04 minutes 25 seconds West, a distance of 30.62 feet to an angle point;
- South 30 degrees 50 minutes 48 seconds West, a distance of 14.32 feet to an angle point;
- South 73 degrees 10 minutes 22 seconds West, a distance of 19.21 feet to an angle point;
- South 79 degrees 34 minutes 02 seconds West, a distance of 24.32 feet to an angle point;
- South 88 degrees 42 minutes 23 seconds West, a distance of 24.32 feet to an angle point;
- North 81 degrees 56 minutes 51 seconds West, a distance of 26.55 feet to an angle point;
- North 75 degrees 32 minutes 51 seconds West, a distance of 44.55 feet to an angle point;
- South 86 degrees 51 minutes 23 seconds West, a distance of 38.54 feet to an angle point;
- South 32 degrees 18 minutes 01 seconds West, a distance of 24.89 feet to an angle point;
- South 01 degrees 09 minutes 37 seconds East, a distance of 24.56 feet to an angle point;
- South 16 degrees 34 minutes 40 seconds East, a distance of 26.68 feet to an angle point;
- South 19 degrees 21 minutes 49 seconds East, a distance of 27.46 feet to an angle point;
- South 03 degrees 00 minutes 28 seconds West, a distance of 22.86 feet to an angle point;
- South 26 degrees 03 minutes 40 seconds West, a distance of 28.42 feet to an angle point;
- South 82 degrees 05 minutes 40 seconds West, a distance of 45.90 feet to an angle point;
- South 39 degrees 53 minutes 51 seconds West, a distance of 25.60 feet to an angle point;
- South 18 degrees 41 minutes 47 seconds West, a distance of 31.43 feet to an angle point;
- South 18 degrees 17 minutes 29 seconds East, a distance of 31.62 feet to an angle point;
- South 29 degrees 58 minutes 37 seconds East, a distance of 17.01 feet to an angle point;
- South 35 degrees 57 minutes 09 seconds East, a distance of 28.14 feet to an angle point;
- South 37 degrees 26 minutes 27 seconds East, a distance of 16.25 feet to an angle point;
- South 30 degrees 17 minutes 27 seconds East, a distance of 24.92 feet to an angle point;
- South 25 degrees 12 minutes 39 seconds East, a distance of 29.07 feet to an angle point;
- South 16 degrees 04 minutes 33 seconds East, a distance of 26.51 feet to an angle point;
- South 13 degrees 12 minutes 51 seconds East, a distance of 26.30 feet to an angle point;

South 24 degrees 29 minutes 28 seconds East, a distance of 10.94 feet to a found 3" metal disc stamped "GLAMOUR ADDITION NO. 2 D&D SURVEYING #4369" in the north line of Lot 1A of the ADOV Addition, as recorded in Volume 93131, Page 8417, D.R.D.C.T.;

THENCE South 48 degrees 55 minutes 34 seconds West, departing the west line of said Rosebriar Stemmons II, L.P. tract and along the north line of said Lot 1A of the ADOV Addition, a distance of 376.17 feet to a found 3" metal disc stamped "GLAMOUR ADDITION NO. 2 D&D SURVEYING #4369" for the point of curvature of a curve to the left having a radius of 115.00 feet, which long chord bears South 13°47'06" West, a distance of 125.74 feet;

THENCE Southerly, along said curve to the left, through a central angle of 66°16'53", an arc distance of 133.04 feet to a found 3" metal disc stamped "GLAMOUR ADDITION NO. 2 D&D SURVEYING #4369" for the point of reverse curvature of a curve to the right having a radius of 270.00 feet, which long chord bears South 07°00'00" West, a distance of 239.72 feet;

THENCE Southerly, along said curve to the right, through a central angle of 52°42'37", an arc distance of 248.39 feet to a found 3" metal disc stamped "GLAMOUR ADDITION NO. 2 D&D SURVEYING #4369" for a corner, said point being on the north line of Technology Boulevard West (56' right-of-way) as recorded in Volume 85199, Page 3322, D.R.D.C.T.;

THENCE South 13°05'33" West a distance of 58.00 feet to a point being on the south line of said Technology Boulevard West and being on a curve to the right having a radius of 426.00 feet, which long chord bears North 72°07'18" West, a distance of 70.59 feet;

THENCE Westerly, along said south line and curve to the right, through a central angle of 09°27'39", an arc distance of 70.67 feet to a point of tangency;

THENCE North 67 degrees 23 minutes 28 seconds West, along said north line, a distance of 103.79 feet to an angle point;

THENCE NORTH, passing at 80.66 feet a found 1/2" iron rod at the southeast corner of Lot 1C and continuing along the common line between Lot 1B and Lot 1C a total distance of 554.67 feet to a 1/2" iron rod found for an angle point at the northeast corner of Lot 1C;

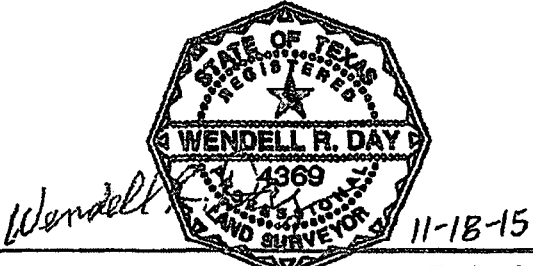
THENCE WEST continuing along the common line between Lot 1B and Lot 1C a distance of 350.00 feet to a 1/2" iron rod found in the west line of said Glamour Addition No.2, said point also being the northwest corner of Lot 1C;

THENCE NORTH, along the west line of said Glamour Addition No.2, passing at 593.16 feet a found 3" metal disc stamped "GLAMOUR ADDITION NO. 2 D&D SURVEYING #4369" at the northwest corner of said Lot 1B and also being in the south line of said Connector Drive and continuing for a total distance of 649.16 feet to a point in the north line of said Connector Drive;

THENCE EAST, along said north line of Connector Drive, a distance of 805.00 feet to the point of curvature of a curve to the left having a radius of 2204.09 feet, which long chord bears North 86°49'16" East, a distance of 244.45 feet;

THENCE Easterly, along said north line and curve to the left, through a central angle of 08°21'29", an arc distance of 244.58 feet to a point for corner;

THENCE South 0°21'29" East a distance of 36.00 feet to the POINT OF BEGINNING and CONTAINING 16.615 acres of land.



D & D Surveying, Inc.		FIRM No. 10011100	
105 S.W. 2ND ST. GRAND PRAIRIE, TX 75051		OFFICE (972)262-3898 ; Fax (972)262-3941	
DRAWN BY TDH	CHECKED BY WRD	SHEET 1 OF 1	
		16 NOV 2015	

Exhibit B

Municipal Setting Designation

Affidavit of Eligibility

BEFORE ME, the undersigned authority, on this day personally appeared S. Susan Self, as an authorized representative of 9999 Technology, LP, known to me to be the person whose name is subscribed below who being by me first duly sworn, upon their oath, stated as follows:

I am over the age of 18 and legally competent to make this affidavit. I have personal knowledge of the facts stated herein.

I affirmatively state that (place an X in all applicable blanks)

- The MSD eligibility criteria of THSC Section 361.803 are satisfied.
- True and accurate copies of all documents demonstrating that the MSD eligibility criteria provided by THSC 361.803 have been satisfied and are included with the application.
- A true and accurate copy of a legal description of the proposed MSD property is included with the application.
- Notice has been provided in accordance with THSC 361.805.
- A copy of an ordinance or restrictive covenant and any required resolutions are provided in this application or will be provided before the executive director certifies this application.

S. Susan Self
Signature

Date: January 10, 2017

S. Susan Self
Printed Name

Vice President
Title

STATE OF Texas

COUNTY OF Dallas

SUBSCRIBED AND SWORN before me on this the 10th day of January 2017, to which witness my hand and seal of office.

[Signature]
Notary Public in and for the State of Texas

